

# YC/YCL

系列大马力单相电容启动异步电动机、大马力单相电容启动运转异步电动机

## HEAVY-DUTY SINGLE-PHASE CAPACITOR START INDUCTION MOTOR WITH CAST IRON HOUSING



YC Series single-phase capacitor start asynchronous motors, with latest design in entirety. It's made of superior materials and meet the relative rules of IEC standard. YC motors have good performance, safe and reliable operation, nice appearance, and can be maintained very conveniently, while with low noise, little vibration, simple construction. This series motors can be used on air compressor, pumps, refrigeration, medical apparatus and instruments, and many other machines that need full-load start.

### OPERATING CONDITIONS

Ambient temperature:  $-15^{\circ}\text{C} \leq 0 \leq 40^{\circ}\text{C}$   
Above sea level: not exceed 1000m  
Rated voltage:  $\pm 5\%$

YC系列单相电容启动异步电动机采用最新式整体设计，用料精良，符合IEC标准。YC电机性能优良，安全、美观，操作方便、低噪音、低振动，安装简易。适用于空压机、水泵、冰箱、医疗器械以及其他需要满载启动的机械。

### 使用条件：

环境温度： $-15^{\circ}\text{C} \leq 0 \leq 40^{\circ}\text{C}$   
海拔高度：不超过 1000m  
额定电压： $\pm 5\%$

### MOTOR FEATURES

- Utilise IP44 enclosures, IP54 on request
- Fixed feet
- Superior paint finish
- Motors made to heavy duty service factors
- Can be made with stainless steel shaft
- Motors made for continuous S1 duty
- Utilise Vacuum impregnated Class F insulation
- High performance and efficiency

### 产品特点

- IP44 (IP54)
- 固定脚
- 外形美观
- 适应于高负载工作
- 可供不锈钢轴
- S1连续工作制
- F级绝缘
- 高性能、高效率

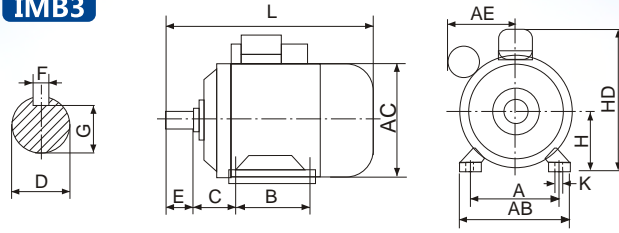
### CUSTOMER BENEFITS

- Water dust and vermin resistant
- Quiet operation
- Electricity saving
- Easy installation
- Corrosion resistant
- Safety and reliable
- Superior life
- Reliable in country, city or factory environments

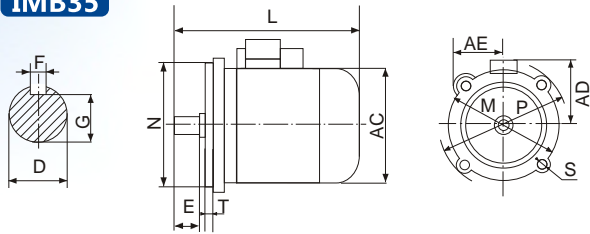
### 产品优势

- 防水、防尘、防腐
- 低噪音
- 节能
- 安装便捷
- 防腐
- 安全可靠
- 使用寿命长
- 适用于乡村、城市、工厂

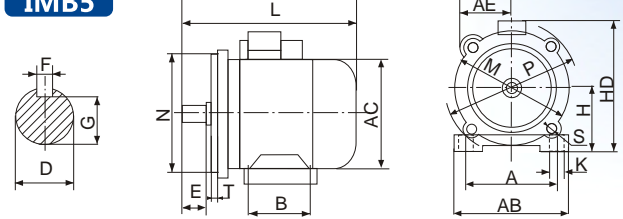
## IMB3



## IMB35



## IMB5



### 外形及安装尺寸 OVERALL & INSTALLATION DIMENSIONS

机座号 Frame size	装配尺寸 Mounting Dimensions (mm)																外型尺寸 Overall Dimensions (mm)				
	A	B	C	D	E	F	G	H	K	M	N	P	R	S	T	AB	AC	AD	AE	HD	L
80	125	100	50	19	40	6	15.5	80	10	165	130	200	0	12	3.5	160	165	120	110	200	310
90S	140	100	56	24	50	8	20	90	10	165	130	200	0	12	3.5	180	185	140	120	240	355
90L	140	125	56	24	50	8	20	90	10	165	130	200	0	12	3.5	180	185	140	120	240	385
100L	160	140	63	28	60	8	24	100	12	215	180	250	0	15	4.0	205	220	145	130	260	415
112M	190	140	70	28	60	8	24	112	12	215	180	250	0	15	4.0	245	250	160	140	200	440
132S	216	140	89	38	80	10	33	132	12	265	230	300	0	15	4.0	280	262	210	150	350	470

### 技术数据 TECHNICAL DATA AT 50Hz

型号 Model	功率 Power		电压 Voltage (V)	电流 Current (A)	转速 Speed (r.p.m)	效率 Eff (%)	功率因数 Power factor	堵转转矩 额定转矩 Tst/Tn(Times)	最大转矩 额定转矩 Tmax/Tn(Times)	堵转电流 额定电流 Ist/In(Times)	净重 N.W.(kg)
	KW	HP									
YC80A-2	0.37	1/2	220	3.5	2880	65	0.73	2.8	1.8	6.5	10
YC80B-2	0.55	3/4	220	5.1	2880	68	0.73	2.8	1.8	6.5	11
YC80C-2	0.75	1	220	6.4	2880	70	0.75	2.4	1.8	6.5	13
YC90S-2	1.1	1.5	220	8.7	2880	72	0.77	2.4	1.8	7.0	17
YC90L-2	1.5	2	220	11.6	2900	74	0.78	2.4	1.8	7.0	22
YC100-2	2.2	3	220	16.4	2900	75	0.79	2.1	1.8	7.0	29
YC80A-4	0.25	1/3	220	3.3	1450	58	0.60	2.8	1.8	6.0	10
YC80B-4	0.37	1/2	220	4.3	1450	62	0.62	2.8	1.8	6.0	11
YC80C-4	0.55	3/4	220	5.7	1450	66	0.65	2.8	1.8	6.0	13
YC90S-4	0.75	1	220	7.4	1450	68	0.66	2.4	1.8	6.5	17
YC90L-4	1.1	1.5	220	10	1450	71	0.68	2.4	1.8	6.5	22
YC100L-4	1.5	2	220	12.9	1450	73	0.70	2.4	1.8	6.5	29
YC112M-4	2.2	3	220	18.5	1450	74	0.72	2.2	1.8	6.5	40
YC132SA-4	3	4	220	24.1	1450	75	0.73	2.1	1.8	6.5	55
YC132SB-4	3.7	5	220	28.7	1450	76	0.74	2.1	1.8	6.5	60
YCL90S-2	1.1	1.5	220	6.9	2880	73.2	0.95	2.8	1.8	6.0	16
YCL90L-2	1.5	2	220	8.5	2900	76.0	0.97	2.8	1.8	7.0	22
YCL100L-2	2.2	3	220	12.6	2900	78.8	0.96	3.0	1.8	6.5	29
YCL90S-4	0.75	1	220	5.3	1450	73.3	0.93	2.8	1.8	6.5	13
YCL90L-4	1.1	1.5	220	7.5	1450	75.0	0.90	2.5	1.8	6.0	16
YCL100L-4	1.5	2	220	8.9	1450	79.4	0.92	2.8	1.8	7.0	24
YCL112M-4	2.2	3	220	12	1450	81.6	0.90	2.3	1.8	6.5	37
YCL132S1-4	4	3	220	18.2	1450	83.2	0.9	2.3	1.8	6.5	53
YCL132S2-4	5.5	4	220	22	1450	84.9	0.9	2.3	1.8	6.5	57
YCL132M1-4	7.5	5.5	220	32.5	1460	85	0.9	2.2	1.8	6.5	60
YCL132M2-4	10	7.5	220	40	1460	85.5	0.9	2.2	1.8	6.5	63

Note: 230V/50Hz, 240V/50Hz, 110V/60Hz, 115V/60Hz, 127V/60Hz ets. Models are available on request

备注：可以按要求生产230V/50Hz, 240V/50Hz, 110V/60Hz, 115V/60Hz, 127V/60Hz等电压频率