

AEEF

系列三相异步电动机
**SERIES THREE PHASE INDUCTION MOTORS
WITH CAST IRON HOUSING**



AEEF Series three-phase asynchronous motor is newly developed by employing up-to-date techniques with individual fully enclosed fan. The appearance is novel and interior structure is unique. It is large in overload capacity, small in temperature rise, low in noise and high in efficiency. The motor will run smoothly with very low vibration and has good speed performance if it is coupled with frequency converter.

OPERATING CONDITIONS

Ambient temperature: $-15^{\circ}\text{C} \leq 0 \leq 40^{\circ}\text{C}$
Above sea level: not exceed 1000m
Rated voltage: $\pm 5\%$

AEEF 系列三相异步电动机是引进国外先进技术，采用全封闭独立风扇设计，外观新颖，内部结构特殊，具有过载能力强，温升低，噪声小，效率高等特点，配上变频器使用，从低速到高速均能保持良好性能，超低振动，运转顺畅。

使用条件：

环境温度： $-15^{\circ}\text{C} \leq 0 \leq 40^{\circ}\text{C}$
海拔高度：不超过 1000m
额定电压： $\pm 5\%$

MOTOR FEATURES

- Utilise IP44 enclosures, IP54 on request
- Fixed feet
- Superior paint finish
- Motors made to heavy duty service factors
- Can be made with stainless steel shaft
- Motors made for continuous S1 duty
- Utilise Vacuum impregnated Class F insulation
- High performance and efficiency

产品特点

- IP44 (IP54)
- 固定脚
- 外形美观
- 适应于高负载工作
- 可供不锈钢轴
- S1连续工作制
- F级绝缘
- 高性能、高效率

CUSTOMER BENEFITS

- Water dust and vermin resistant
- Quiet operation
- Electricity saving
- Easy installation
- Corrosion resistant
- Safety and reliable
- Superior life
- Reliable in country, city or factory environments

产品优势

- 防水、防尘、防腐
- 低噪音
- 节能
- 安装便捷
- 防腐
- 安全可靠
- 使用寿命长
- 适用于乡村、城市、工厂

技术数据 TECHNICAL DATA AT 50Hz

型号 Model	功率 Power		满负荷 Full Load						堵转转矩 额定转矩 Tst/Tn(Times)	起动电流 额定电流 Ist/In(Times)	净重 Net Weight (B3) kg
	KW	HP	电压 Voltage (V)	电流 Current (A)	转速 Speed (r.p.m)	转矩 Torque Kg-M	效率 Eff (%)	功率因数 Power factor (cos φ)			
AEEF63	0.18	1/4	380	0.66	2740	0.07	56.0	0.77	2.2	5.5	13
AEEF63				0.67	1345	0.13	60.5	0.70	2.1	4.4	14
AEEF71				0.79	910	0.20	60.0	0.60	1.9	4.0	10
AEEF71	0.37	1/2	380	0.89	2785	0.13	75.0	0.85	2.2	5.5	14
AEEF71				1.24	1370	0.26	65.5	0.70	2.1	5.2	15
AEEF80				1.34	925	0.39	63.0	0.67	1.9	4.7	17
AEEF80	0.75	1	380	1.70	2800	0.26	76.5	0.87	2.2	6.1	16
AEEF80				2.13	1400	0.52	72.0	0.74	2.3	6.0	17
AEEF90L				2.28	930	0.78	71.0	0.70	2.0	5.5	25
AEEF90L	1.5	2	380	3.22	2820	0.51	80.0	0.88	2.2	7.0	25
AEEF90L				3.82	14000	1.04	75.5	0.78	2.3	6.0	27
AEEF100L				4.20	935	1.55	75.5	0.71	2.0	5.5	33
AEEF90L	2.2	3	380	4.60	2850	0.76	83.5	0.88	2.2	7.0	26
AEEF100L				5.18	1430	1.52	80.0	0.82	2.3	7.0	34
AEEF112M				5.73	950	2.29	78.0	0.76	2.0	6.5	45
AEEF112M	3.7	5	380/660	7.36	2875	1.26	85.5	0.90	2.2	7.5	45
AEEF112M				8.03	1400	2.52	84.5	0.84	2.3	7.0	43
AEEF132S				9.32	960	3.78	80.5	0.76	2.1	6.5	63
AEEF132S	5.5	7.5	380/660	11.1	2900	1.88	86.5	0.89	2.2	7.5	64
AEEF132S				12.0	1450	3.75	80.0	0.83	2.3	7.0	68
AEEF132M				13.0	960	5.67	84.5	0.78	2.1	6.5	73
AEEF132S	7.5	10	380/660	14.5	2900	2.50	88.5	0.89	2.2	7.5	70
AEEF132M				15.2	1450	5.00	87.5	0.86	2.3	7.0	81
AEEF160M				16.6	970	7.48	88.5	0.80	2.0	6.5	119
AEEF160M	11	15	380/660	21.3	2930	3.72	88.5	0.90	2.2	7.5	117
AEEF160M				21.6	1460	7.46	87.5	0.88	2.2	7.5	123
AEEF160L				22.9	970	11.20	88.5	0.84	2.0	7.0	147
AEEF160M	15	20	380/660	27.7	2930	4.95	90.0	0.91	2.2	7.5	125
AEEF160L				28.3	1460	9.94	90.5	0.89	2.2	7.5	144
AEEF180M				30.9	970	15.00	89.0	0.83	2.0	7.0	185
AEEF160L	18.5	25	380/660	35.2	2915	6.23	90.0	0.90	2.2	7.5	147
AEEF180M				36.0	1460	12.4	91.0	0.87	2.2	7.5	182
AEEF180L				38.2	970	18.70	90.0	0.83	2.1	7.0	195
AEEF180M	22	30	380/660	41.3	2950	7.38	91.5	0.90	2.0	7.5	180
AEEF180M				43.9	1455	15.00	90.5	0.85	2.2	7.5	196
AEEF180L				46.3	970	22.40	89.5	0.82	2.1	7.0	203
AEEF180L	30	40	380/660	54.2	2935	9.89	92.0	0.91	2.0	7.5	188
AEEF180L				58.6	1460	20.00	91.0	0.85	2.2	7.2	196

Note: 230/400V/50Hz 240/415V/50Hz, 400/690V/50Hz, 420V/50Hz 380/440V/50/60Hz ets. Models are available on request
 备注：可以按要求生产230/400V/50Hz 240/415V/50Hz, 400/690V/50Hz, 420V/50Hz 380/440V/50/60Hz 等电压频率

Fig. 1

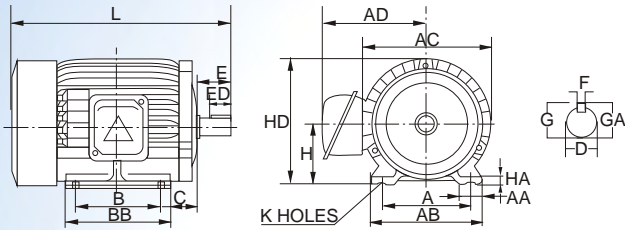


Fig. 3

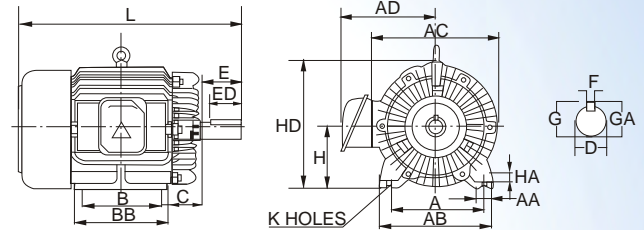


Fig. 2

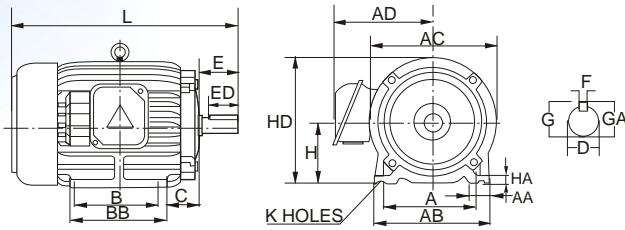
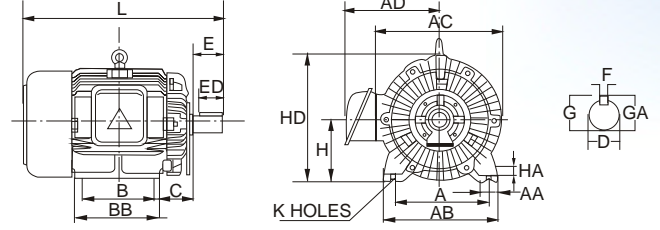


Fig. 4

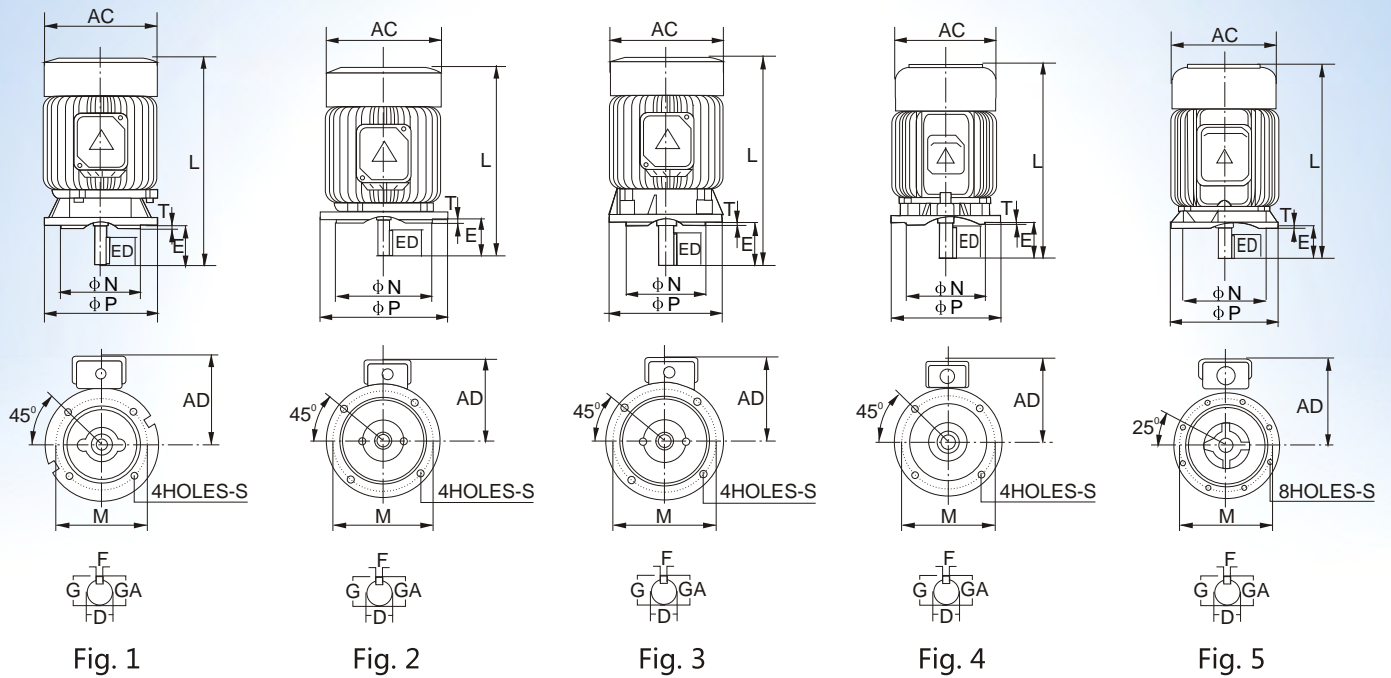


外形及安装尺寸 OVERALL & INSTALLATION DIMENSIONS

Frame Size	Output(HP)			Fig. No.	A	AA	AB	AC	AD	B	BB	C	D	E	ED	F	G	GA	H	HA	HD	K	L
	2P	4P	6P																				
63	0.25	0.25	-	1	100	28.0	120	144	134	80	100	40	11	23	10	4	8.5	12.5	63	8.0	135	7	209
71	0.5	0.5	0.25	1	112	35.5	140	160	142	90	115	45	14	30	14	5	11.0	16.0	71	8.0	151	7	239
80	1	1	0.5	1	125	35.5	155	175	163	100	130	50	19	40	25	6	15.5	21.0	80	9.0	168	10	272
90L	2 3	2	1	1	140	35.5	170	194	173	125	150	56	24	50	32	8	20.0	27.0	90	10.0	187	10	322
100L	-	3	2	2	160	45.0	195	210	187	140	175	63	28	60	40	8	24.0	31.0	100	12.5	243	12	363
112M	5	5	3	2	190	45.0	224	230	205	140	175	70	28	60	40	8	24.0	31.0	112	14.0	265	12	382
132S	7.5 10	7.5	5	2	216	45.0	250	266	223	140	175	89	38	80	56	10	33.0	41.0	132	16.0	310	12	446
132M	-	10	7.5	2	216	45.0	250	266	223	178	212	89	38	80	56	10	33.0	41.0	132	16.0	310	12	484
160M	15 20	15	10	3	254	50.0	300	324	265	210	250	108	42	110	80	12	37.0	45.0	160	18.0	377	15	604
160L	25	20	15	3	254	50.0	300	324	265	254	300	108	42	110	80	12	37.0	45.0	160	18.0	377	15	648
180M	30	-	-	4	279	75.0	355	360	301	241	297	121	48	110	80	14	42.5	51.5	180	20.0	421	15	687
180M	-	25 30	20	3	279	75.0	355	360	301	241	297	121	48	110	80	14	42.5	51.5	180	20.0	421	15	687
180L	40	-	-	4	279	75.0	355	360	301	279	335	121	55	110	80	16	49.0	59.0	180	20.0	421	15	725
180L	-	40	25 30	4	279	75.0	355	360	301	279	335	121	55	110	80	16	49.0	59.0	180	20.0	421	15	725

备注: 1.轴伸端直径D公差: 11-28:j6, 38-48:k6, 55-65:m6
2.中心高H公差: +0, -0.5

Note: 1. Tolerance of shaft end diameter D: 11-28:j6, 38-48:k6, 55-65:m6
2. Tolerance of shaft center height H: +0, -0.5



外形及安装尺寸 OVERALL & INSTALLATION DIMENSIONS

Frame Size	Output(HP)			Fig. No.	AC	AD	L	M	N	P	S	T	D	Shaft Extension				
	2P	4P	6P											E	ED	F	G	GA
63	0.25	0.25	-	1	144	134	238	130	110	160	10	3.5	11	23	10	4	8.5	12.5
71	0.5	0.5	0.25	1	160	142	266	130	110	160	10	3.5	14	30	14	5	11.0	16.0
80	1	1	0.5	2	175	163	272	165	130	200	12	3.5	19	40	25	6	15.5	21.5
90L	2 3	2	1	1	194	173	361	165	130	200	12	3.5	24	50	32	8	20.0	27.0
100L	-	3	2	2	210	187	363	215	180	250	15	4.0	28	60	40	8	24.0	31.0
112M	5	5	3	3	230	205	422	215	180	250	15	4.0	28	60	40	8	24.0	41.0
132S	7.5 10	7.5	5	2	266	223	446	265	230	300	15	4.0	38	80	56	10	33.0	41.0
132M	-	10	7.5	2	266	223	484	265	230	300	15	4.0	38	80	56	10	33.0	41.0
160M	15 20	15	10	4	324	265	604	300	250	350	19	5.0	42	110	80	12	37.0	45.0
160L	25	20	15	4	324	265	648	300	250	350	19	5.0	42	110	80	12	37.0	45.0
180M	30	-	-	4	360	301	687	350	300	400	19	5.0	48	110	80	14	42.5	51.5
180M	-	25 30	20	4	360	301	687	350	300	400	19	5.0	48	110	80	14	42.5	51.5
180L	40	-	-	5	360	301	725	350	300	400	19	5.0	55	110	80	16	49.0	59.0
180L	-	40	25 30	5	360	301	725	350	300	400	19	5.0	55	110	80	16	49.0	59.0

备注: 1.轴伸端直径 D公差: $\phi 11-\phi 28:j6$, $\phi 38-\phi 48:k6$, $\phi 55-\phi 65:m6$
2.中心高H公差: +0, -0.5

Note: 1.Tolerance of shaft end diameter D: $\phi 11-\phi 28:j6$, $\phi 38-\phi 48:k6$, $\phi 55-\phi 65:m6$
2.Tolerance of shaft center height H: +0, -0.5