

Y 系列三相异步电动机
SERIES THREE-PHASE ASYNCHRONOUS MOTORS
WITH CAST IRON HOUSING



Y Series motors are totally enclosed and fan cooling, three-phase squirrel cage induction motor, it is newly designed in conformity with the relevant rules of IEC and DIN42673 standards.

Y series motors have outstanding performance, such as high efficiency, energy saving, high starting torque, low noise, little vibration, reliable operation and easy maintenance, etc.

Y series motors are widely used in many places, where do not exist combustible, explosive or corrosive gas, and without any special requirements, such as machine tools, pumps, fans, transport machinery, mixer, agriculture machinery and food machines, etc.

OPERATING CONDITIONS

Ambient temperature: $-15^{\circ}\text{C} \leq 0 \leq 40^{\circ}\text{C}$

Above sea level: not exceed 1000m

Rated voltage: $\pm 5\%$

Y 系列电动机是全封闭自扇冷式鼠笼型三相异步电动机，是最新设计的基本系列，符合IEC标准的有关规定。Y 系列电动机具有高效、节能、起动转矩大、噪声低、振动小、可靠性高、使用维护方便等特点。

Y 系列电动机广泛应用于不含易燃、易爆或腐蚀性气体的一般场合和特殊要求的机械设备上，如金属切削机床、泵、风机、运输机械、搅拌机、农业机械和食品机械等。

使用条件：

环境温度： $-15^{\circ}\text{C} \leq 0 \leq 40^{\circ}\text{C}$

海拔：不超过1000m

额定电压： $\pm 5\%$

MOTOR FEATURES

- Utilise IP44 enclosures, IP54 on request
- Fixed feet
- Superior paint finish
- Motors made to heavy duty service factors
- Can be made with stainless steel shaft
- Motors made for continuous S1 duty
- Utilise Vacuum impregnated Class F insulation
- High performance and efficiency

产品特点

- IP44 (IP54)
- 固定脚
- 外形美观
- 适应于高负载工作
- 可供不锈钢轴
- S1连续工作制
- F级绝缘
- 高性能、高效率

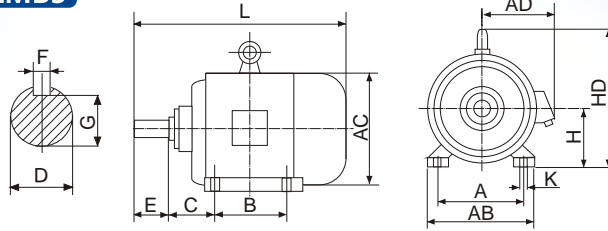
CUSTOMER BENEFITS

- Water dust and vermin resistant
- Quiet operation
- Electricity saving
- Easy installation
- Corrosion resistant
- Safety and reliable
- Superior life
- Reliable in country, city or factory environments

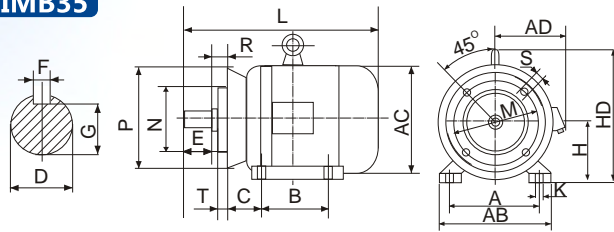
产品优势

- 防水、防尘、防害
- 低噪音
- 节能
- 安装便捷
- 防腐
- 安全可靠
- 使用寿命长
- 适用于乡村、城市、工厂

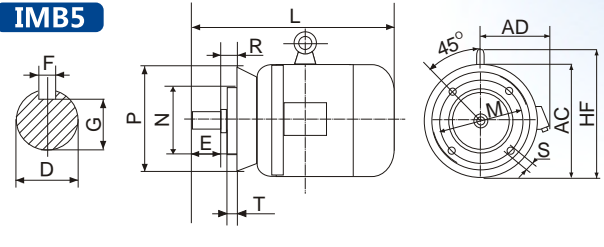
IMB3



IMB35



IMB5



外形及安装尺寸 OVERALL & INSTALLATION DIMENSIONS

机座号 Frame size	装配尺寸 Mounting Dimensions (mm)															外型尺寸 Overall Dimensions (mm)					
	A	B	C	D	E	F	G	H	K	M	N	P	R	S	T	AB	AC	AD	HD	HF	L
Y80	125	100	50	19	40	6	15.5	80	10	165	130	200	0	12	3.5	165	175	150	175	185	290
Y90S	140	100	56	24	50	8	20	90	10	165	130	200	0	12	3.5	180	195	160	195	195	315
Y90L	140	125	56	24	50	8	20	90	10	165	130	200	0	12	3.5	180	195	160	195	195	340
Y100L	160	140	63	28	60	8	24	100	12	215	180	250	0	15	4	205	215	180	245	245	380
Y112M	190	140	70	28	60	8	24	112	12	215	180	250	0	15	4	245	240	190	265	265	400
Y132S	216	140	89	38	80	10	33	132	12	265	230	300	0	15	4	280	275	210	315	315	475
Y132M	216	178	89	38	80	10	33	132	12	265	230	300	0	15	4	280	275	210	315	315	515
Y160M	254	210	108	42	110	12	37	160	15	300	250	350	0	19	5	330	335	265	385	385	605
Y160L	254	254	108	42	110	12	37	160	15	300	250	350	0	19	5	330	335	265	385	385	650
Y180M	279	241	121	48	110	14	42.5	180	15	300	250	350	0	19	5	355	380	285	430	430	670
Y180L	279	279	121	48	110	14	42.5	180	15	300	250	350	0	19	5	355	380	285	430	430	710
Y200L	318	305	133	55	110	16	49	200	19	350	300	400	0	19	5	395	420	315	475	480	775
Y225S	356	286	149	60	140	18	53	225	19	400	350	450	0	19	5	435	475	345	530	535	820
Y225M-2	356	311	149	55	110	16	49	225	19	400	350	450	0	19	5	435	475	345	530	535	815
Y225M-4, 6	356	311	149	60	140	18	53	225	19	400	350	450	0	19	5	435	475	345	530	535	845
Y250M-2	406	349	168	60	140	18	53	250	24	500	450	550	0	19	5	490	515	385	575	650	930
Y250M-4, 6	406	349	168	65	140	18	58	250	24	500	450	550	0	19	5	490	515	385	575	650	930
Y280S-2	457	368	190	65	140	18	58	280	24	500	450	550	0	19	5	550	580	410	640	720	1000
Y280S-4, 6	457	368	190	75	140	20	67.5	280	24	500	450	550	0	19	5	550	580	410	640	720	1000
Y280M-2	457	419	190	65	140	18	58	280	24	500	450	550	0	19	5	550	580	410	640	720	1050
Y280M-4, 6	457	419	190	75	140	20	67.5	280	24	500	450	550	0	19	5	550	580	410	640	720	1050
Y315S-2	508	406	216	65	140	18	58	315	28	600	550	660	0	24	6	744	645	576	865	900	1240
Y315S-4, 6	508	406	216	80	170	22	71	315	28	600	550	660	0	24	6	744	645	576	865	900	1270
Y315M-2	508	457	216	65	140	18	58	315	28	600	550	660	0	24	6	744	645	576	865	900	1310
Y315M-4, 6	508	457	216	80	170	22	71	315	28	600	550	660	0	24	6	744	645	576	865	900	1340
Y315L-2	508	508	216	65	140	18	58	315	28	600	550	660	0	24	6	744	645	576	865	900	1310
Y315L-4, 6	508	508	216	80	170	22	71	315	28	600	550	660	0	24	6	744	645	576	865	900	1340

技术数据 TECHNICAL DATA AT 50Hz

型号 Model	功率 Power		电压 Voltage (V)	电流 Current (A)	转速 Speed (r.p.m)	效率 Eff (%)	功率因数 Power factor	堵转转矩 额定转矩 Tst/Tn(Times)	最大转矩 额定转矩 Tmax/Tn(Times)	堵转电流 额定电流 Ist/In(Times)	净重 N.W.(kg)
	KW	HP									
Y801-2	0.75	1	220/380	1.8/1.04	2830	75.0	0.84	2.2	2.3	6.5	17
Y802-2	1.1	1.5	220/380	2.5/1.44	2830	77.0	0.86	2.2	2.3	7.0	18
Y90S-2	1.5	2	220/380	3.4/1.96	2840	78.0	0.85	2.2	2.3	7.0	22
Y90L-2	2.2	3	220/380	4.8/2.77	2840	80.5	0.86	2.2	2.3	7.0	26
Y100L-2	3	4	220/380	6.4/3.7	2870	82.0	0.87	2.2	2.3	7.0	35
Y112M-2	4	5.5	380/660	8.2/4.7	2890	85.5	0.87	2.2	2.3	7.0	45
Y132S1-2	5.5	7.5	380/660	11.1/6.4	2900	85.5	0.88	2.0	2.3	7.0	67
Y132S2-2	7.5	10	380/660	15/8.66	2900	86.2	0.88	2.0	2.3	7.0	71
Y160M1-2	11	15	380/660	21.8/12.6	2930	87.2	0.88	2.0	2.3	7.0	118
Y160M2-2	15	20	380/660	29.4/17	2930	88.2	0.88	2.0	2.3	7.0	130
Y160L-2	18.5	25	380/660	35.5/20.5	2930	89.0	0.89	2.0	2.2	7.0	150
Y180M-2	22	30	380/660	42.2/24.36	2940	89.0	0.89	2.0	2.2	7.0	175
Y200L1-2	30	40	380/660	57/32.9	2950	90.0	0.89	2.0	2.2	7.0	227
Y200L2-2	37	50	380/660	69.8/40.3	2950	90.5	0.89	2.0	2.2	7.0	255
Y225M-2	45	60	380/660	84/48.5	2970	91.5	0.89	2.0	2.2	7.0	320
Y250M-2	55	75	380/660	103/59.47	2970	91.5	0.89	2.0	2.2	7.0	389
Y280S-2	75	100	380/660	139/80.3	2970	92.0	0.89	2.0	2.2	7.0	520
Y280M-2	90	125	380/660	166/95.8	2970	92.5	0.89	2.0	2.2	7.0	577
Y315S-2	110	150	380/660	203/117.2	2980	92.5	0.89	1.8	2.2	6.8	980
Y315M-2	132	180	380/660	242/139.7	2980	93.0	0.89	1.8	2.2	6.8	1080
Y315L1-2	160	220	380/660	292/168.6	2980	93.5	0.89	1.8	2.2	6.8	1160
Y315L2-2	200	270	380/660	365/210.7	2980	93.5	0.89	1.8	2.2	6.8	1210
Y801-4	0.55	0.75	220/380	1.5/0.87	1390	73.0	0.76	2.4	2.3	6.0	17
Y802-4	0.75	1	220/380	2/1.15	1390	74.5	0.76	2.3	2.3	6.0	18
Y90S-4	1.1	1.5	220/380	2.8/1.62	1400	78.0	0.78	2.3	2.3	6.5	23
Y90L-4	1.5	2	220/380	3.7/2.14	1400	79.0	0.79	2.3	2.3	6.5	27
Y100L1-4	2.2	3	220/380	5/2.9	1430	81.0	0.82	2.2	2.3	7.0	35
Y100L2-4	3	4	220/380	6.8/3.93	1430	82.5	0.81	2.2	2.3	7.0	38
Y112M-4	4	5.5	380/660	8.8/5.08	1440	84.5	0.82	2.2	2.3	7.0	49
Y132S-4	5.5	7.5	380/660	11.6/6.7	1440	85.5	0.84	2.2	2.3	7.0	67
Y132M-4	7.5	10	380/660	15.4/8.9	1440	87.0	0.85	2.2	2.3	7.0	80
Y160M-4	11	15	380/660	22.6/13.1	1460	88.0	0.84	2.2	2.3	7.0	124
Y160L-4	15	20	380/660	30.3/17.5	1460	88.5	0.85	2.2	2.3	7.0	147
Y180M-4	18.5	25	380/660	36/20.7	1470	91.0	0.86	2.0	2.2	7.0	169
Y180L-4	22	30	380/660	42.5/24.5	1470	91.5	0.86	2.0	2.2	7.0	184
Y200L-4	30	40	380/660	56.8/32.8	1470	92.2	0.87	2.0	2.2	7.0	241
Y225S-4	37	50	380/660	70.4/40.7	1470	91.8	0.87	1.9	2.2	7.0	300
Y225M-4	45	60	380/660	84.2/48.6	1470	92.3	0.88	1.9	2.2	7.0	330
Y250M-4	55	75	380/660	103/59.5	1480	92.6	0.88	2.0	2.2	7.0	400
Y280S-4	75	100	380/660	140/80.8	1480	92.7	0.88	1.9	2.2	7.0	546
Y280M-4	90	125	380/660	164/94.7	1480	93.5	0.89	1.9	2.2	7.0	620
Y315S-4	110	150	380/660	201/1.7	1480	93.5	0.89	1.8	2.2	6.8	1000
Y315M-4	132	180	380/660	240/138.6	1490	94.0	0.89	1.8	2.2	6.8	1100
Y315L1-4	160	220	380/660	289/166.8	1490	94.5	0.89	1.8	2.2	6.8	1140
Y315L2-4	200	270	380/660	361/208.4	1490	94.5	0.89	1.8	2.2	6.8	1190

技术数据 TECHNICAL DATA AT 50Hz

型号 Model	功率 Power		电压 Voltage (V)	电流 Current (A)	转速 Speed (r.p.m)	效率 Eff (%)	功率因数 Power factor	堵转转矩 额定转矩 Tst/Tn(Times)	最大转矩 额定转矩 Tmax/Tn(Times)	堵转电流 额定电流 Ist/In(Times)	净重 N.W.(kg)
	KW	HP									
Y90S-6	0.75	1	220/380	2.2/1.27	910	72.5	0.70	2.0	2.2	5.5	23
Y90L-6	1.1	1.5	220/380	3.2/1.85	910	73.5	0.72	2.0	2.2	5.5	25
Y100L-6	1.5	2	220/380	4/2.31	940	77.5	0.74	2.0	2.2	6.0	33
Y112M-6	2.2	3	220/380	5.6/3.23	940	80.5	0.74	2.0	2.2	6.0	45
Y132S-6	3	4	220/380	7.2/4.16	960	83.0	0.76	2.0	2.2	6.5	63
Y132M1-6	4	5.5	380/660	9.4/5.43	960	84.0	0.77	2.0	2.2	6.5	73
Y132M2-6	5.5	7.5	380/660	12.6/7.27	960	85.3	0.78	2.0	2.2	6.5	84
Y160M-6	7.5	10	380/660	17/9.8	970	86.0	0.78	2.0	2.0	6.5	119
Y160L-6	11	15	380/660	24.6/14.2	970	87.0	0.78	2.0	2.0	6.5	147
Y180L-6	15	20	380/660	31.4/18.1	970	89.5	0.81	1.8	2.0	6.5	181
Y200L1-6	18.5	25	380/660	37.7/21.77	970	89.8	0.83	1.8	2.0	6.5	215
Y200L2-6	22	30	380/660	44.6/25.7	970	90.2	0.83	1.8	2.0	6.5	235
Y225M-6	30	40	380/660	59.5/34.5	970	90.2	0.85	1.7	2.0	6.5	294
Y250M-6	37	50	380/660	72/41.6	980	90.8	0.86	1.8	2.0	6.5	390
Y280S-6	45	60	380/660	85/49.1	980	92.0	0.87	1.8	2.0	6.5	506
Y280M-6	55	75	380/660	104/60.05	980	92.0	0.87	1.8	2.0	6.5	553
Y315S-6	75	100	380/660	141/81.4	990	92.8	0.87	1.6	2.0	6.5	990
Y315M-6	90	120	380/660	169/97.6	990	93.2	0.87	1.6	2.0	6.5	1080
Y315L1-6	110	150	380/660	205.5/118.7	990	93.5	0.87	1.6	2.0	6.5	1150
Y315L2-6	132	176	380/660	246/1.7	990	93.8	0.87	1.6	2.0	6.5	1210
Y132S-8	2.2	3	220/380	5.85/3.38	710	80.5	0.71	2.0	2.0	5.5	63
Y132M-8	3	4	220/380	7.72/4.46	710	82.0	0.72	2.0	2.0	5.5	79
Y160M1-8	4	5.5	380/660	9.9/5.72	720	84.0	0.73	2.0	2.0	6.0	118
Y160M2-8	5.5	7.5	380/660	13.3/7.7	720	85.0	0.74	2.0	2.0	6.0	119
Y160L-8	7.5	10	380/660	17.7/10.2	730	86.0	0.75	2.0	2.0	5.5	145
Y180L-8	11	15	380/660	24.8/14.32	730	87.5	0.77	1.7	2.0	6.0	172
Y200L-8	15	20	380/660	34.1/19.7	730	88.0	0.76	1.8	2.0	6.0	220
Y225S-8	18.5	25	380/660	41.3/23.8	730	89.5	0.76	1.7	2.0	6.0	263
Y225M-8	22	30	380/660	47.6/27.5	740	90.0	0.78	1.8	2.0	6.0	293
Y250M-8	30	40	380/660	63/36.4	740	90.5	0.80	1.8	2.0	6.0	390
Y280S-8	37	50	380/660	78.2/45.2	740	91.0	0.79	1.8	2.0	6.0	508
Y280M-8	45	60	380/660	93.2/53.8	740	91.7	0.80	1.8	2.0	6.0	533
Y315S-8	55	75	380/660	114/65.8	740	92.0	0.80	1.6	2.0	6.5	1000
Y315M-8	75	100	380/660	152/87.8	740	92.5	0.81	1.6	2.0	6.5	1100
Y315L-8	90	125	380/660	179/103.4	740	93.0	0.82	1.6	2.0	6.5	1160
Y315L2-8	110	150	380/660	218/125.9	740	93.3	0.82	1.6	2.0	6.3	1230

Note: 230/400V/50Hz 240/415V/50Hz, 400/690V/50Hz, 420V/50Hz 380/440V/50/60Hz ets. Models are available on request
 备注：可以按要求生产230/400V/50Hz 240/415V/50Hz, 400/690V/50Hz, 420V/50Hz 380/440V/50/60Hz 等电压频率