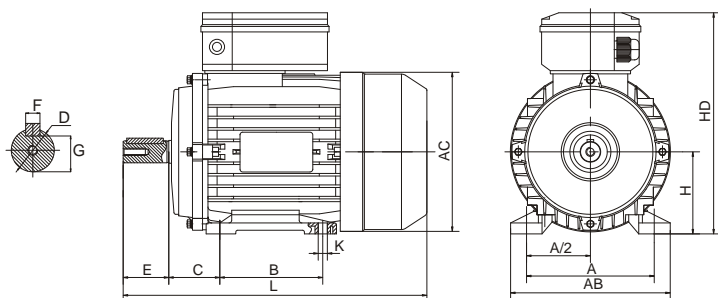


## AC SERIES AIR COMPRESSOR MOTORS WITH ALUMINIUM HOUSING

- Conform to the IEC standard
- Be made of selected quality materials, latest design in entirety
- Good performance, low noise, little vibration, safe and reliable cooperation
- Nice appearance, light weight
- Be maintained very conveniently, simple construction
- Lower starting torque 0.3 to 0.4 times more than rated torque
- Be used in a multitude of application where the lower starting torque is demanded, such as home electric appliances, pumps, fans and recording meters, etc.

- 符合IEC标准
- 优质材料，设计新颖
- 高性能，低噪音，低振动，操作安全可靠
- 外形美观，重量轻
- 维护方便，结构简单
- 启动转矩低，0.3至0.4倍额定转矩
- 广泛应用于众多对启动转矩要求低的领域，如家用电器，水泵，风机和测量仪等。



### 外形及安装尺寸 OVERALL & INSTALLATION DIMENSIONS

机座号 Frame size	装配尺寸 Mounting Dimensions(mm)										外型尺寸Overall			
	IMB3										Overall Dimension			
	A	B	C	D	E	F	G	H	K	AB	AC	HD	L	
AC801-2	125	100	50	19	40	6	15.5	80	10X13	154	φ154	228	285	
AC802-2	125	100	50	19	40	6	15.5	80	10X13	154	φ154	228	285	
AC803-2	125	100	50	19	40	6	15.5	80	10X13	154	φ154	228	285	
AC801-4	125	100	50	19	40	6	15.5	80	10X13	154	φ154	228	285	
AC802-4	125	100	50	19	40	6	15.5	80	10X13	154	φ154	228	285	

### 技术数据 TECHNICAL DATA AT 50 HZ

型号 Model	功率 Power		电压 Voltage (V)	电流 Current (A)	转速 Speed (r.p.m)	效率 Eff (%)	功率因数 Power factor	堵转转矩 额定转矩 Tst/Tn(Times)	最大转矩 额定转矩 Tmax/Tn(Times)	堵转电流 额定电流 Ist/In(Times)	净重 N.W.(kg)
	KW	HP									
AC801-2	0.75	1	220	4.7	2800	72	0.92	0.33	1.7	20	8
AC802-2	1.1	1.5	220	6.7	2800	75	0.95	0.33	1.7	30	10
AC803-2	1.5	2	220	9.4	2800	76	0.95	0.3	1.7	45	10.5
AC801-4	0.55	0.75	220	4.25	1400	64	0.92	0.35	1.7	15	8.5
AC802-4	0.75	1	220	4.5	1400	68	0.92	0.33	1.7	20	9

Note: 230V/50Hz ,240V/50Hz ,110V/60Hz , 115V/60Hz ,127V/60Hz ets. Models are available on request  
备注：可以按要求生产230V/50Hz,240V/50Hz,110V/60Hz, 115V/60Hz,127V/60Hz等电压频率